

Instructions for Updating an Expired License

IBM SPSS Statistics Version 28 License Code

Version 28 is now the required version of SPSS if you have a Walden-issued laptop. It is supported on the following Operating Systems:

- Windows 10
- Windows 8
- Windows 7
- OS Big Sur 10.17
- OS Catalina 10.15
- OS Mojave 10.14
- OS High Sierra 10.13
- OS Sierra 10.12

Copy the following code into the "Enter Codes" screen in the SPSS installation wizard -

**** If you encounter an error when copying and pasting the SPSS license code, please try manually entering the code before contacting Customer Care for installation and licensing support.**

This code will be valid through March 31, 2023. At that time, you must re-visit this site for an updated license code.

Students may obtain the SPSS license code from this link:

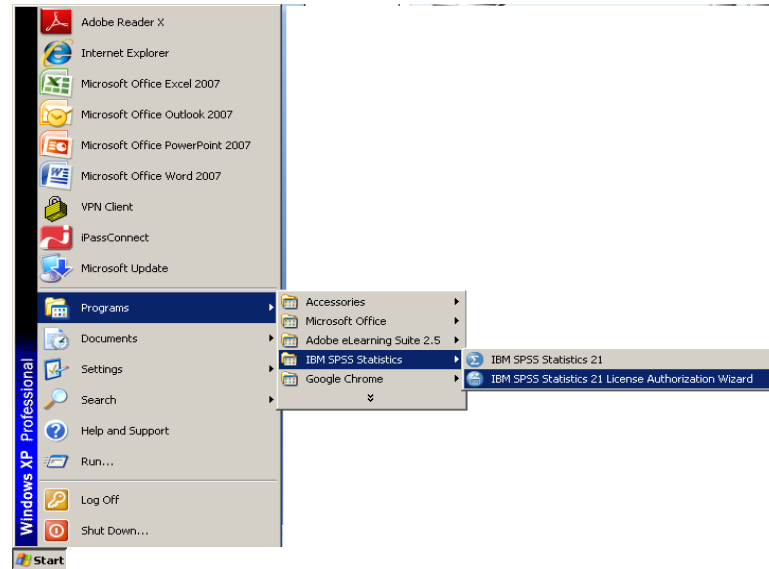
<https://alaureatena.sharepoint.com/sites/walden-university/student-documents/spss/Pages/default.aspx>

Faculty may obtain the SPSS license code from this link:

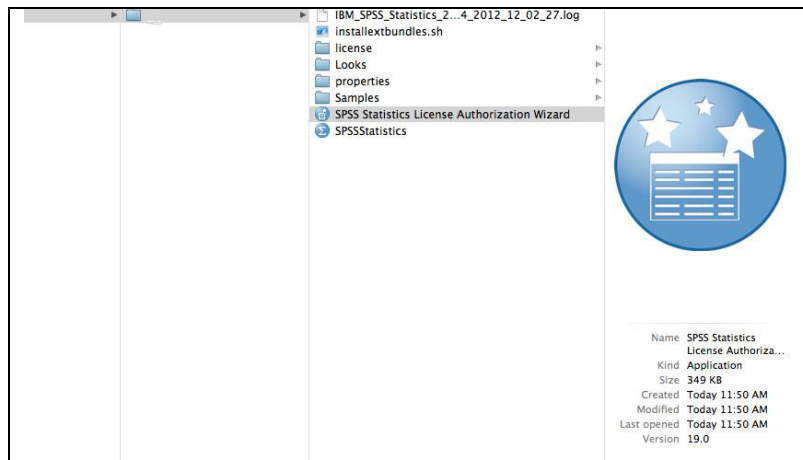
<https://dvi.sharepoint.com/sites/walden-faculty-spss>

You may need to enter your Office 365 credentials.

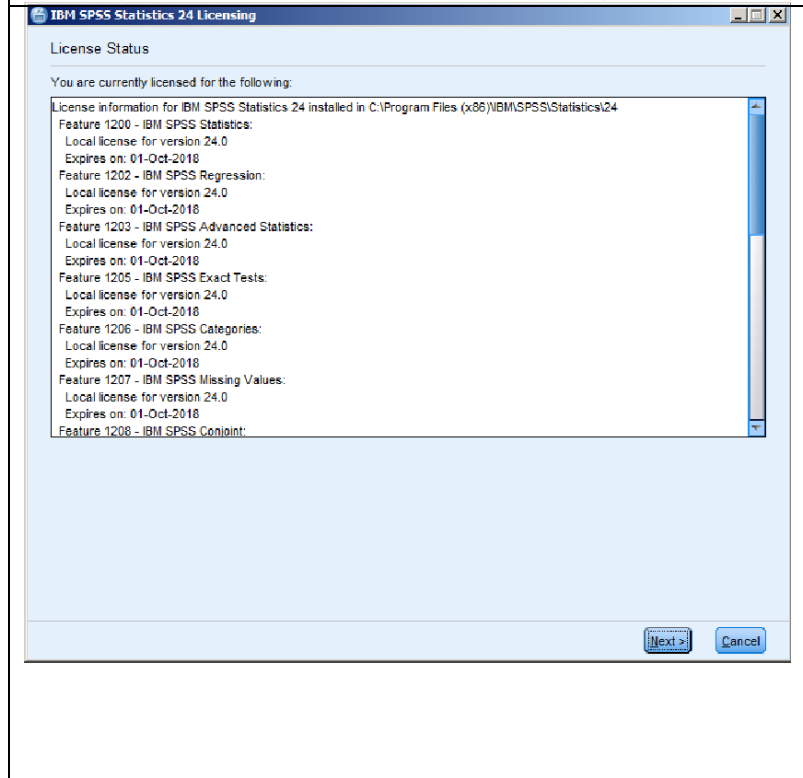
Windows



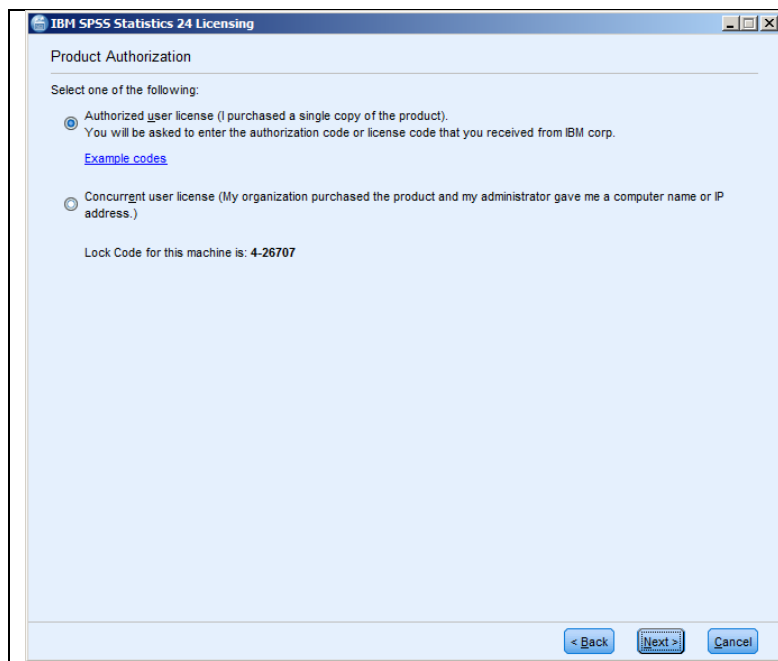
Then access the SPSS License Authorization Wizard. On a Windows computer, this will be under Start → Programs → IBM SPSS Statistics → IBM SPSS Statistics License Authorization Wizard.



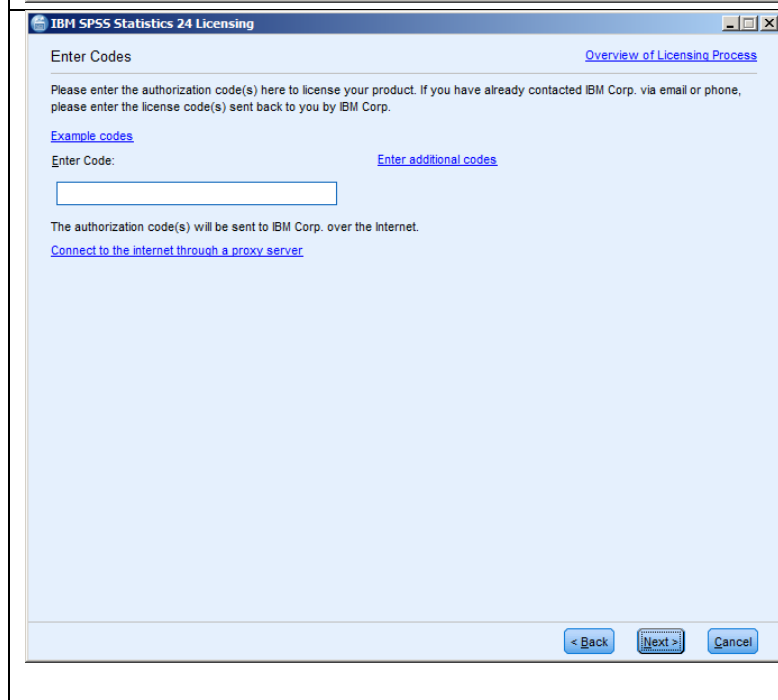
MAC
Finder → SPSS Statistics License
Authorization Wizard



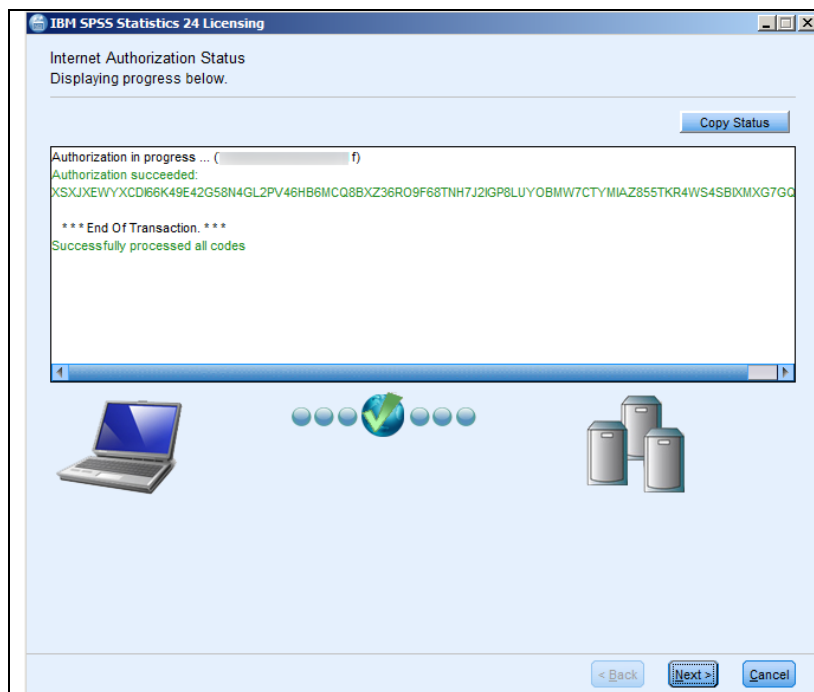
A list of items that you have
licensed will display. Click
Next.



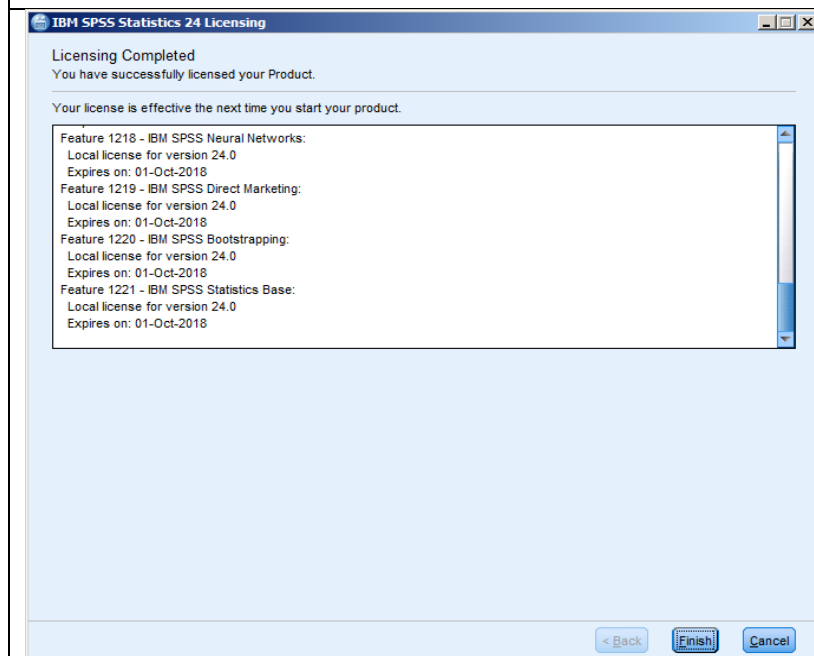
Select "Authorized user license" and click **Next**.



In the "Enter Code" field, paste the license code you copied from the license code site. Then click **Next**.



The code will then be validated. Click **Next**.



The updated expiration dates will be displayed.

Click **Finish**.